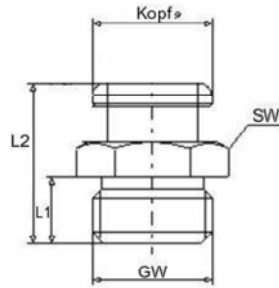


Button-Head Grease Nipples DIN 3404



Button-Head Grease Nipples Type M4

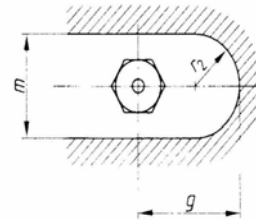
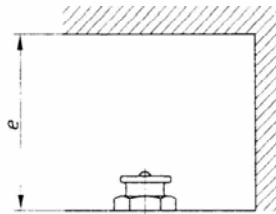
- head \varnothing 10 mm
- according to DIN 3404
- straight version A / 180°
- standard versions according to DIN are made of steel, zinc-plated and passivated, with cylindrical thread
- for further types and materials, please see table, or upon request



Kopf = Head (\varnothing 10 mm)
 SW = Wrench Size
 L1 = Thread Length
 L2 = Total Length
 GW = Thread
 All measures in mm

Instructions for installation: necessary space

- e = 50 mm/2-11/64"
- m = 26 mm/1-17/64"
- r = 14mm/41/64"
- g = 30mm/1-25/64"



Ref.- No.:	SW 11			Thread
	L1	L2		
PLBHM4SW1101	6	13,5		M6 x 1,0
PLBHM4SW1102	6	13,5		M8 x 1,0
PLBHM4SW1103	6	13,5		M10 x 1,0
PLBHM4SW1104	6	13,5		G 1/8 1/8 -28 BSPP